

**NATIONAL REGISTER OF HISTORIC PLACES
INVENTORY – NOMINATION FORM**

PHOTOS

**EAST END HISTORIC DISTRICT
NEWBURGH, NEW YORK**



East End Historic District
Newburgh, Orange County, New York
Photos: Historic Architecture and
Decorative Art Consultants, 1983
Neg: Division for Historic
Preservation, Albany, New York

View 1 : Broadway, north side,
east of Liberty Street

View 2 : Grand Street, west side,
north of Broadway

East End Historic District
Newburgh, Orange County, New York
Photos: Historic Architecture and
Decorative Art Consultants, 1983
Neg: Division for Historic
Preservation, Albany, New York

2



East End Historic District
Newburgh, Orange County, New York
Photos: Historic Architecture and
Decorative Art Consultants, 1983
Neg: Division for Historic
Preservation, Albany, New York

View 3 : Grand Street east side
north of Broadway

N

East End Historic District
Newburgh, Orange County, New York
Photos: Historic Architecture and
Decorative Art Consultants, 1983
Neg: Division for Historic
Preservation, Albany, New York

View 4 : Grand Street, east side,
south of Second Street

N



East End Historic District
Newburgh, Orange County, New York
Photos: Historic Architecture and
Decorative Art Consultants, 1983
Neg: Division for Historic
Preservation, Albany, New York

View 5 : Liberty Street, west side
at intersection of Campbell Street

W

East End Historic District
Newburgh, Orange County, New York
Photos: Historic Architecture and
Decorative Art Consultants, 1983
Neg: Division for Historic
Preservation, Albany, New York

View 6 : First Street, north side,
east of Liberty Street

N



East End Historic District
Newburgh, Orange County, New York
Photos: Historic Architecture and
Decorative Art Consultants, 1983
Neg: Division for Historic
Preservation, Albany, New York

View 7 : First Street, north side,
east of Grand Street

N

East End Historic District
Newburgh, Orange County, New York
Photos: Historic Architecture and
Decorative Art Consultants, 1983
Neg: Division for Historic
Preservation, Albany, New York

View 8 : Broadway, east of
DuBois Street



East End Historic District
Newburgh, Orange County, New York
Photos: Historic Architecture and
Decorative Art Consultants, 1983
Neg: Division for Historic
Preservation, Albany, New York

View 9 : Broadway, south side,
west of Mill Street

East End Historic District
Newburgh, Orange County, New York
Photos: Historic Architecture and
Decorative Art Consultants, 1983
Neg: Division for Historic
Preservation, Albany, New York

View 10 : Broadway, south side,
east of Mill Street



East End Historic District
Newburgh, Orange County, New York
Photos: Historic Architecture and
Decorative Art Consultants, 1983
Neg: Division for Historic
Preservation, Albany, New York

View 11 : Broadway, north side,
east of Carpenter Avenue

East End Historic District
Newburgh, Orange County, New York
Photos: Historic Architecture and
Decorative Art Consultants, 1983
Neg: Division for Historic
Preservation, Albany, New York

View 12: Broadway, north side,
east of Lutheran Street



East End Historic District
Newburgh, Orange County, New York
Photos: Historic Architecture and
Decorative Art Consultants, 1983
Neg: Division for Historic
Preservation, Albany, New York

View ³ : Broadway, south side, east
of Clark Street

East End Historic District
Newburgh, Orange County, New York
Photos: Historic Architecture and
Decorative Art Consultants, 1983
Neg: Division for Historic
Preservation, Albany, New York

View ⁴ : Broadway, north side,
east of DuBois Street



East End Historic District
Newburgh, Orange County, New York
Photos: Historic Architecture and
Decorative Art Consultants, 1983
Neg: Division for Historic
Preservation, Albany, New York

View 15: Broadway, south side, east
of S. Johnson Street

East End Historic District
Newburgh, Orange County, New York
Photos: Historic Architecture and
Decorative Art Consultants, 1983
Neg: Division for Historic
Preservation, Albany, New York

View 16: Broadway, north side,
east of Johnson Street



East End Historic District
Newburgh, Orange County, New York
Photos: Historic Architecture and
Decorative Art Consultants, 1983
Neg: Division for Historic
Preservation, Albany, New York

View 17 : Broadway, north side,
east of Lander Street

East End Historic District
Newburgh, Orange County, New York
Photos: Historic Architecture and
Decorative Art Consultants, 1983
Neg: Division for Historic
Preservation, Albany, New York

View 18: 123 Broadway



View 19: Broadway, south side,
west of Grand Street

East End Historic District
Newburgh, Orange County, New York
Photos: Historic Architecture and
Decorative Art Consultants, 1983
Neg: Division for Historic
Preservation, Albany, New York

East End Historic District
Newburgh, Orange County, New York
Photos: Historic Architecture and
Decorative Art Consultants, 1983
Neg: Division for Historic
Preservation, Albany, New York

View 20: Broadway, south side,
east of Grand Street



East End Historic District
Newburgh, Orange County, New York
Photos: Historic Architecture and
Decorative Art Consultants, 1983
Neg: Division for Historic
Preservation, Albany, New York

View 21: Montgomery Street, west
side, south of South Street

East End Historic District
Newburgh, Orange County, New York
Photos: Historic Architecture and
Decorative Art Consultants, 1983
Neg: Division for Historic
Preservation, Albany, New York

View 22: Montgomery Street, east
side, south of Clinton Street

2



East End Historic District
Newburgh, Orange County, New York
Photos: Historic Architecture and
Decorative Art Consultants, 1983
Neg: Division for Historic
Preservation, Albany, New York

View 24: 208-216 Montgomery Street

East End Historic District
Newburgh, Orange County, New York
Photos: Historic Architecture and
Decorative Art Consultants, 1983
Neg: Division for Historic
Preservation, Albany, New York

View 26: Montgomery Street, east
side, between Broad and Clinton
Streets

N



East End Historic District
Newburgh, Orange County, New York
Photos: Historic Architecture and
Decorative Art Consultants, 1983
Neg: Division for Historic
Preservation, Albany, New York

view 27 : Grand Street, east side,
north of Catherine Street

N

East End Historic District
Newburgh, Orange County, New York
Photos: Historic Architecture and
Decorative Art Consultants, 1983
Neg: Division for Historic
Preservation, Albany, New York

View 30 : Grand Street, east side,
north of South Street



East End Historic District
Newburgh, Orange County, New York
Photos: Historic Architecture and
Decorative Art Consultants, 1983
Neg: Division for Historic
Preservation, Albany, New York

View 31: Calvary Presbyterian
Church, Grand Street, west side,
north of South Street

East End Historic District
Newburgh, Orange County, New York
Photos: Historic Architecture and
Decorative Art Consultants, 1983
Neg: Division for Historic
Preservation, Albany, New York

View 32: Old Town Cemetery,
Grand Street, west side, north
of South Street



View 33: Westminster Presbyterian
Church (formerly) Grand Street,
west side, north of Catherine
Street

East End Historic District
Newburgh, Orange County, New York
Photos: Historic Architecture and
Decorative Art Consultants, 1983
Neg: Division for Historic
Preservation, Albany, New York

East End Historic District
Newburgh, Orange County, New York
Photos: Historic Architecture and
Decorative Art Consultants, 1983
Neg: Division for Historic
Preservation, Albany, New York

View 34: Grand Street, west side,
south of Clinton Street



East End Historic District
Newburgh, Orange County, New York
Photos: Historic Architecture and
Decorative Art Consultants, 1983
Neg: Division for Historic
Preservation, Albany, New York

View ³⁵ : South Street, south side,
between Liberty and Grand Streets

N

East End Historic District
Newburgh, Orange County, New York
Photos: Historic Architecture and
Decorative Art Consultants, 1983
Neg: Division for Historic
Preservation, Albany, New York

View ³⁶ : Liberty Street, west
side, south of First Street

N



East End Historic District
Newburgh, Orange County, New York
Photos: Historic Architecture and
Decorative Art Consultants, 1983
Neg: Division for Historic
Preservation, Albany, New York

View 37: Liberty Street, west side,
south of Campbell Street

60

East End Historic District
Newburgh, Orange County, New York
Photos: Historic Architecture and
Decorative Art Consultants, 1983
Neg: Division for Historic
Preservation, Albany, New York

View 38: Liberty Street, west side,
north of Farrington Street



East End Historic District
Newburgh, Orange County, New York
Photos: Historic Architecture and
Decorative Art Consultants, 1983
Neg: Division for Historic
Preservation, Albany, New York

View ³⁹: Liberty Street, east side,
south of South Street.

View 40: Chambers Street, west
side, ~~north of Campbell Street~~
south of First Street

East End Historic District
Newburgh, Orange County, New York
Photos: Historic Architecture and
Decorative Art Consultants, 1983
Neg: Division for Historic
Preservation, Albany, New York

3



East End Historic District
Newburgh, Orange County, New York
Photos: Historic Architecture and
Decorative Art Consultants, 1983
Neg: Division for Historic
Preservation, Albany, New York

View 41: Chambers Street, west
side, north of Campbell Street

View 42: Chambers Street, west
side, south of Farrington Street

East End Historic District
Newburgh, Orange County, New York
Photos: Historic Architecture and
Decorative Art Consultants, 1983
Neg: Division for Historic
Preservation, Albany, New York

6



43
View: Chambers Street, west side,
south of Sidney Avenue

East End Historic District
Newburgh, Orange County, New York
Photos: Historic Architecture and
Decorative Art Consultants, 1983
Neg: Division for Historic
Preservation, Albany, New York

East End Historic District
Newburgh, Orange County, New York
Photos: Historic Architecture and
Decorative Art Consultants, 1983
Neg: Division for Historic
Preservation, Albany, New York

View 44: Lander Street, east side,
north of Broadway



East End Historic District
Newburgh, Orange County, New York
Photos: Historic Architecture and
Decorative Art Consultants, 1983
Neg: Division for Historic
Preservation, Albany, New York

45
View 45: Lander Street, east side,
north of First Street

W

East End Historic District
Newburgh, Orange County, New York
Photos: Historic Architecture and
Decorative Art Consultants, 1983
Neg: Division for Historic
Preservation, Albany, New York

46
View 46: Lander Street, east side,
north of Campbell Street

W



East End Historic District
Newburgh, Orange County, New York
Photos: Historic Architecture and
Decorative Art Consultants, 1983
Neg: Division for Historic
Preservation, Albany, New York

View 47: Lander Street, east side,
south of Third Street

East End Historic District
Newburgh, Orange County, New York
Photos: Historic Architecture and
Decorative Art Consultants, 1983
Neg: Division for Historic
Preservation, Albany, New York

View 48: Lander Street, ~~west~~ east side,
south of South Street

W



East End Historic District
Newburgh, Orange County, New York
Photos: Historic Architecture and
Decorative Art Consultants, 1983
Neg: Division for Historic
Preservation, Albany, New York

View ⁴⁹: Lander Street, east side,
south of South Street

View ⁵⁰: Lander Street, west side,
south of South Street

East End Historic District
Newburgh, Orange County, New York
Photos: Historic Architecture and
Decorative Art Consultants, 1983
Neg: Division for Historic
Preservation, Albany, New York

W



East End Historic District
Newburgh, Orange County, New York
Photos: Historic Architecture and
Decorative Art Consultants, 1983
Neg: Division for Historic
Preservation, Albany, New York

View S1: Johnson Street, west side,
south of First Street

b

East End Historic District
Newburgh, Orange County, New York
Photos: Historic Architecture and
Decorative Art Consultants, 1983
Neg: Division for Historic
Preservation, Albany, New York

View 52: Johnson Street, east side
north of Farrington Street

b



VIEW 53: 150 Johnson Street

East End Historic District
Newburgh, Orange County, New York
Photos: Historic Architecture and
Decorative Art Consultants, 1983
Neg: Division for Historic
Preservation, Albany, New York

East End Historic District
Newburgh, Orange County, New York
Photos: Historic Architecture and
Decorative Art Consultants, 1983
Neg: Division for Historic
Preservation, Albany, New York

View 54: Johnson Street, west side,
south of South Street

6



East End Historic District
Newburgh, Orange County, New York
Photos: Historic Architecture and
Decorative Art Consultants, 1983
Neg: Division for Historic
Preservation, Albany, New York

55
View: Gidney Avenue, south side,
west of Liberty Street

55

b

East End Historic District
Newburgh, Orange County, New York
Photos: Historic Architecture and
Decorative Art Consultants, 1983
Neg: Division for Historic
Preservation, Albany, New York

View 56 : Liberty Street, west side,
north of Clinton Street

3



East End Historic District
Newburgh, Orange County, New York
Photos: Historic Architecture and
Decorative Art Consultants, 1983
Neg: Division for Historic
Preservation, Albany, New York

57
View 57: South Street, north side,
west of Liberty Street

w

East End Historic District
Newburgh, Orange County, New York
Photos: Historic Architecture and
Decorative Art Consultants, 1983
Neg: Division for Historic
Preservation, Albany, New York

View 58: Farrington Street, north
side, east of Chambers Street

w



East End Historic District
Newburgh, Orange County, New York
Photos: Historic Architecture and
Decorative Art Consultants, 1983
Neg: Division for Historic
Preservation, Albany, New York

View 59: Third Street, north side,
west of Chambers Street

5
View 60: Third Street, south side,
at intersection of Chambers Street

East End Historic District
Newburgh, Orange County, New York
Photos: Historic Architecture and
Decorative Art Consultants, 1983
Neg: Division for Historic
Preservation, Albany, New York

W



East End Historic District
Newburgh, Orange County, New York
Photos: Historic Architecture and
Decorative Art Consultants, 1983
Neg: Division for Historic
Preservation, Albany, New York

View 61 : Johnson Street, east side,
at Campbell Street

W

East End Historic District
Newburgh, Orange County, New York
Photos: Historic Architecture and
Decorative Art Consultants, 1983
Neg: Division for Historic
Preservation, Albany, New York

View 62: DuBois Street, east side
at Broadway



East End Historic District
Newburgh, Orange County, New York
Photos: Historic Architecture and
Decorative Art Consultants, 1983
Neg: Division for Historic
Preservation, Albany, New York

View 63: DuBois Street, east side,
north of Van Ness Street

4

East End Historic District
Newburgh, Orange County, New York
Photos: Historic Architecture and
Decorative Art Consultants, 1983
Neg: Division for Historic
Preservation, Albany, New York

View 64: 41-45 DuBois Street



East End Historic District
Newburgh, Orange County, New York
Photos: Historic Architecture and
Decorative Art Consultants, 1983
Neg: Division for Historic
Preservation, Albany, New York

View 65: DuBois Street, east side
north of Third Street

65

East End Historic District
Newburgh, Orange County, New York
Photos: Historic Architecture and
Decorative Art Consultants, 1983
Neg: Division for Historic
Preservation, Albany, New York

View 66: DuBois Street, west side,
south of Gidney Avenue

66



View 67 : South Miller Street,
west side, south of First Street

East End Historic District
Newburgh, Orange County, New York
Photos: Historic Architecture and
Decorative Art Consultants, 1983
Neg: Division for Historic
Preservation, Albany, New York

4

View 68 : South Miller Street, east
side, south of First Street

East End Historic District
Newburgh, Orange County, New York
Photos: Historic Architecture and
Decorative Art Consultants, 1983
Neg: Division for Historic
Preservation, Albany, New York



East End Historic District
Newburgh, Orange County, New York
Photos: Historic Architecture and
Decorative Art Consultants, 1983
Neg: Division for Historic
Preservation, Albany, New York

69
View 69 : North Miller Street,
east side, north of Farrington
Street

h

East End Historic District
Newburgh, Orange County, New York
Photos: Historic Architecture and
Decorative Art Consultants, 1983
Neg: Division for Historic
Preservation, Albany, New York

70
View 70 : City Terrace north of
Van Ness Street

h



East End Historic District
Newburgh, Orange County, New York
Photos: Historic Architecture and
Decorative Art Consultants, 1983
Neg: Division for Historic
Preservation, Albany, New York

View 71 : Lutheran Street, east
side, south of First Street

*Lutheran St. east side
south of First St.*

4

East End Historic District
Newburgh, Orange County, New York
Photos: Historic Architecture and
Decorative Art Consultants, 1983
Neg: Division for Historic
Preservation, Albany, New York

View 72 : First Street, north side,
east of DuBois Street

4



East End Historic District
Newburgh, Orange County, New York
Photos: Historic Architecture and
Decorative Art Consultants, 1983
Neg: Division for Historic
Preservation, Albany, New York

View 73: First Street, north side,
east of Lutheran Street

East End Historic District
Newburgh, Orange County, New York
Photos: Historic Architecture and
Decorative Art Consultants, 1983
Neg: Division for Historic
Preservation, Albany, New York

View 74: Farrington Street,
south side, west of Johnson Street



East End Historic District
Newburgh, Orange County, New York
Photos: Historic Architecture and
Decorative Art Consultants, 1983
Neg: Division for Historic
Preservation, Albany, New York

View 75: Third Street, south side,
east of Carpenter Avenue

East End Historic District
Newburgh, Orange County, New York
Photos: Historic Architecture and
Decorative Art Consultants, 1983
Neg: Division for Historic
Preservation, Albany, New York

View 76: Third Street, south side,
west of Carpenter Street



View 77: 253 Third Street

East End Historic District
Newburgh, Orange County, New York
Photos: Historic Architecture and
Decorative Art Consultants, 1983
Neg: Division for Historic
Preservation, Albany, New York

East End Historic District
Newburgh, Orange County, New York
Photos: Historic Architecture and
Decorative Art Consultants, 1983
Neg: Division for Historic
Preservation, Albany, New York

View 78 : Downing Park

78



East End Historic District
Newburgh, Orange County, New York
Photos: Historic Architecture and
Decorative Art Consultants, 1983
Neg: Division for Historic
Preservation, Albany, New York

View 79 : Downing Park

5

5
East End Historic District
Newburgh, Orange County, New York
Photos: Historic Architecture and
Decorative Art Consultants, 1983
Neg: Division for Historic
Preservation, Albany, New York

View 80 : Downing Park



5

East End Historic District
Newburgh, Orange County, New York
Photos: Historic Architecture and
Decorative Art Consultants, 1983
Neg: Division for Historic
Preservation, Albany, New York

View 81 : Downing Park

81

East End Historic District
Newburgh, Orange County, New York
Photos: Historic Architecture and
Decorative Art Consultants, 1983
Neg: Division for Historic
Preservation, Albany, New York

View 82 : Downing Park

82

~~81~~

5



View 83 : Downing Park

East End Historic District
Newburgh, Orange County, New York
Photos: Historic Architecture and
Decorative Art Consultants, 1983
Neg: Division for Historic
Preservation, Albany, New York

5

5
East End Historic District
Newburgh, Orange County, New York
Photos: Historic Architecture and
Decorative Art Consultants, 1983
Neg: Division for Historic
Preservation, Albany, New York

View 84 : Downing Park



East End Historic District
Newburgh, Orange County, New York
Photos: Historic Architecture and
Decorative Art Consultants, 1983
Neg: Division for Historic
Preservation, Albany, New York

View 35: Mount Mt. Mary's College
Liberty Street, west side, south
of Broad Street

East End Historic District
Newburgh, Orange County, New York
Photos: Historic Architecture and
Decorative Art Consultants, 1983
Neg: Division for Historic
Preservation, Albany, New York

View 36: Liberty Street, east
side, north of Broad Street



East End Historic District
Newburgh, Orange County, New York
Photos: Historic Architecture and
Decorative Art Consultants, 1983
Neg: Division for Historic
Preservation, Albany, New York

View 87: 450 Liberty Street

East End Historic District
Newburgh, Orange County, New York
Photos: Historic Architecture and
Decorative Art Consultants, 1983
Neg: Division for Historic
Preservation, Albany, New York

View 88: Liberty Street, east
side, north of Nicoll Street



East End Historic District
Newburgh, Orange County, New York
Photos: Historic Architecture and
Decorative Art Consultants, 1983
Neg: Division for Historic
Preservation, Albany, New York

View 89 : Liberty Street, east side
south of Nicoll Street

W

East End Historic District
Newburgh, Orange County, New York
Photos: Historic Architecture and
Decorative Art Consultants, 1983
Neg: Division for Historic
Preservation, Albany, New York

View: Liberty Street, west side,
south of North Street

90

W



East End Historic District
Newburgh, Orange County, New York
Photos: Historic Architecture and
Decorative Art Consultants, 1983
Neg: Division for Historic
Preservation, Albany, New York

View 91 : Grand Street, east
side, south of Broad Street

N

East End Historic District
Newburgh, Orange County, New York
Photos: Historic Architecture and
Decorative Art Consultants, 1983
Neg: Division for Historic
Preservation, Albany, New York

View 92 : Grand Street, west side
north of Broad Street

N



View 93: 355 Grand Street

East End Historic District
Newburgh, Orange County, New York
Photos: Historic Architecture and
Decorative Art Consultants, 1983
Neg: Division for Historic
Preservation, Albany, New York

East End Historic District
Newburgh, Orange County, New York
Photos: Historic Architecture and
Decorative Art Consultants, 1983
Neg: Division for Historic
Preservation, Albany, New York

View : Grand Street, east side,
between Broad and Nicoll Streets

94

N



East End Historic District
Newburgh, Orange County, New York
Photos: Historic Architecture and
Decorative Art Consultants, 1983
Neg: Division for Historic
Preservation, Albany, New York

View 95: 388 Grand Street

East End Historic District
Newburgh, Orange County, New York
Photos: Historic Architecture and
Decorative Art Consultants, 1983
Neg: Division for Historic
Preservation, Albany, New York

View 96 Grand Street, east side
at LeRoy Place

N



East End Historic District
Newburgh, Orange County, New York
Photos: Historic Architecture and
Decorative Art Consultants, 1983
Neg: Division for Historic
Preservation, Albany, New York

97
View : LeRoy Place, south
side, west of Grand Avenue

East End Historic District
Newburgh, Orange County, New York
Photos: Historic Architecture and
Decorative Art Consultants, 1983
Neg: Division for Historic
Preservation, Albany, New York

98
View: LeRoy Place, north side,
east of Grand Street



East End Historic District
Newburgh, Orange County, New York
Photos: Historic Architecture and
Decorative Art Consultants, 1983
Neg: Division for Historic
Preservation, Albany, New York

View: Washington Headquarters
State Historic Site, Liberty Street
east side between Washington
and Lafayette Streets

99

East End Historic District
Newburgh, Orange County, New York
Photos: Historic Architecture and
Decorative Art Consultants, 1983
Neg: Division for Historic
Preservation, Albany, New York

View: Grand Street, east side,
west of Washington Street

100



East End Historic District
Newburgh, Orange County, New York
Photos: Historic Architecture and
Decorative Art Consultants, 1983
Neg: Division for Historic
Preservation, Albany, New York

101
View: Liberty Street, west side,
north of Washington Street

101

East End Historic District
Newburgh, Orange County, New York
Photos: Historic Architecture and
Decorative Art Consultants, 1983
Neg: Division for Historic
Preservation, Albany, New York

102
View: Liberty Street, west side,
north of Parmenter Street

102



East End Historic District
Neuburgh, Orange County, New York
Photos: Historic Architecture and
Decorative Art Consultants, 1983
Neg: Division for Historic
Preservation, Albany, New York

View 103: Liberty Street, east side,
South of Boulevard Ave.

East End Historic District
Neuburgh, Orange County, New York
Photos: Historic Architecture and
Decorative Art Consultants, 1983
Neg: Division for Historic
Preservation, Albany, New York

View: Washington Street, north
side, east of Liberty Street

104

1



East End Historic District
Newburgh, Orange County, New York
Photos: Historic Architecture and
Decorative Art Consultants, 1983
Neg: Division for Historic
Preservation, Albany, New York

View: Washington Street, south side
west of Liberty Street

105

East End Historic District
Newburgh, Orange County, New York
Photos: Historic Architecture and
Decorative Art Consultants, 1983
Neg: Division for Historic
Preservation, Albany, New York

View: Washington Street, south
side, east of Clark Street

106

2



East End Historic District
Newburgh, Orange County, New York
Photos: Historic Architecture and
Decorative Art Consultants, 1983
Neg: Division for Historic
Preservation, Albany, New York

107
VIEW: Ann Street, south side,
west of Grand Street

107

East End Historic District
Newburgh, Orange County, New York
Photos: Historic Architecture and
Decorative Art Consultants, 1983
Neg: Division for Historic
Preservation, Albany, New York

108
View: Parmenter Street, north side
east of Federal Street

108



109

View: Spring Street, north side
West of Liberty Street

East End Historic District
Newburgh, Orange County, New York
Photos: Historic Architecture and
Decorative Art Consultants, 1983
Neg: Division for Historic
Preservation, Albany, New York

East End Historic District
Newburgh, Orange County, New York
Photos: Historic Architecture and
Decorative Art Consultants, 1983
Neg: Division for Historic
Preservation, Albany, New York

View 110: St. George's Cemetery



East End Historic District
Newburgh, Orange County, New York
Photos: Historic Architecture and
Decorative Art Consultants, 1983
Neg: Division for Historic
Preservation, Albany, New York

View 111: St. George's Cemetery

East End Historic District
Newburgh, Orange County, New York
Photos: Historic Architecture and
Decorative Art Consultants, 1983
Neg: Division for Historic
Preservation, Albany, New York

View 112: Johnes Street, east side,
north of s. William Street



East End Historic District
Newburgh, Orange County, New York
Photos: Historic Architecture and
Decorative Art Consultants, 1983
Neg: Division for Historic
Preservation, Albany, New York

View: southeast corner of Renwick
and Colden Street

113

East End Historic District
Newburgh, Orange County, New York
Photos: Historic Architecture and
Decorative Art Consultants, 1983
Neg: Division for Historic
Preservation, Albany, New York

View: Newburgh Paper Box
Colden Street, east side,
south of Washington Street

114



East End Historic District
Newburgh, Orange County, New York
Photos: Historic Architecture and
Decorative Art Consultants, 1983
Neg: Division for Historic
Preservation, Albany, New York

View 115: Renwick Street, north side,
east of Johnes Street

East End Historic District
Newburgh, Orange County, New York
Photos: Historic Architecture and
Decorative Art Consultants, 1983
Neg: Division for Historic
Preservation, Albany, New York

View: William Street, east side,
south of Parmenter Street

116



East End Historic District
Newburgh, Orange County, New York
Photos: Historic Architecture and
Decorative Art Consultants, 1983
Neg: Division for Historic
Preservation, Albany, New York

117
View: William Street, west side
south of Benard Street

117

10

East End Historic District
Newburgh, Orange County, New York
Photos: Historic Architecture and
Decorative Art Consultants, 1983
Neg: Division for Historic
Preservation, Albany, New York

118
View: William Street, west side,
south of Hasbrouck Street

118

10



East End Historic District
Newburgh, Orange County, New York
Photos: Historic Architecture and
Decorative Art Consultants, 1983
Neg: Division for Historic
Preservation, Albany, New York

119
View: South William Street,
south side, west of South Clark
Street

120
East End Historic District
Newburgh, Orange County, New York
Photos: Historic Architecture and
Decorative Art Consultants, 1983
Neg: Division for Historic
Preservation, Albany, New York

View: Bankard Avenue, north side,
west of Liberty Street

120



East End Historic District
Newburgh, Orange County, New York
Photos: Historic Architecture and
Decorative Art Consultants, 1983
Neg: Division for Historic
Preservation, Albany, New York

View 121B: Benkard Avenue, ^{North}~~South~~ side,
east of monument street

East End Historic District
Newburgh, Orange County, New York
Photos: Historic Architecture and
Decorative Art Consultants, 1983
Neg: Division for Historic
Preservation, Albany, New York

View 121A - Benkard Avenue, south side
east of Little Monument Street



East End Historic District
Newburgh, Orange County, New York
Photos: Historic Architecture and
Decorative Art Consultants, 1983
Neg: Division for Historic
Preservation, Albany, New York

View 122: Benkard Avenue
east of Avoca

East End Historic District
Newburgh, Orange County, New York
Photos: Historic Architecture and
Decorative Art Consultants, 1983
Neg: Division for Historic
Preservation, Albany, New York

173
View: Liberty Street, west side,
north of Renwick Street

123



124

View: Remwick Street, south side,
west of South Lander Street

East End Historic District
Newburgh, Orange County, New York
Photos: Historic Architecture and
Decorative Art Consultants, 1983
Neg: Division for Historic
Preservation, Albany, New York

East End Historic District
Newburgh, Orange County, New York
Photos: Historic Architecture and
Decorative Art Consultants, 1983
Neg: Division for Historic
Preservation, Albany, New York

View 125: Remwick Street, south side
east of South Lander Street



View 125B: Renwick Street, north side
west of S. Lauder Street

East End Historic District
Newburgh, Orange County, New York
Photos: Historic Architecture and
Decorative Art Consultants, 1983
Neg: Division for Historic
Preservation, Albany, New York

East End Historic District
Newburgh, Orange County, New York
Photos: Historic Architecture and
Decorative Art Consultants, 1983
Neg: Division for Historic
Preservation, Albany, New York

View: Renwick Street, south side
east of William Street

126

N



127

View: South Clark Street, east
side, south of Benard Avenue

East End Historic District
Newburgh, Orange County, New York
Photos: Historic Architecture and
Decorative Art Consultants, 1983
Neg: Division for Historic
Preservation, Albany, New York

10

East End Historic District
Newburgh, Orange County, New York
Photos: Historic Architecture and
Decorative Art Consultants, 1983
Neg: Division for Historic
Preservation, Albany, New York

View: Carson Street, south side,
west of Liberty Street

128

1



East End Historic District
Newburgh, Orange County, New York
Photos: Historic Architecture and
Decorative Art Consultants, 1983
Neg: Division for Historic
Preservation, Albany, New York

View: Overlook Place, north side,
east of Monument Street

129

2

East End Historic District
Newburgh, Orange County, New York
Photos: Historic Architecture and
Decorative Art Consultants, 1983
Neg: Division for Historic
Preservation, Albany, New York

View: Overlook Place, south side,
east of Liberty Street

130

(



View 131A: 63 S. Liberty Street

East End Historic District
Newburgh, Orange County, New York
Photos: Historic Architecture and
Decorative Art Consultants, 1983
Neg: Division for Historic
Preservation, Albany, New York

East End Historic District
Newburgh, Orange County, New York
Photos: Historic Architecture and
Decorative Art Consultants, 1983
Neg: Division for Historic
Preservation, Albany, New York

View 131B: S. Liberty Street, east side,
South of Henry Street



East End Historic District
Newburgh, Orange County, New York
Photos: Historic Architecture and
Decorative Arts Consultants, 1983
Neg: NYS Division for Historic
Preservation, Albany, New York

VIEW 131C: S. Liberty St., east side
north of Courtney Ave.

East End Historic District
Newburgh, Orange County, New York
Photos: Historic Architecture and
Decorative Art Consultants, 1983
Neg: Division for Historic
Preservation, Albany, New York

132
View: South Lander Street,
west side north of Overlook Place

132



East End Historic District
Newburgh, Orange County, New York
Photos: Historic Architecture and
Decorative Art Consultants, 1983
Neg: Division for Historic
Preservation, Albany, New York

View: Courtney Street, north side,
west of Bay View Terrace

133

East End Historic District
Newburgh, Orange County, New York
Photos: Historic Architecture and
Decorative Arts Consultants, 1983
Neg: NYS Division for Historic
Preservation, Albany, New York

View 134: Courtney Avenue, south side,
west of Liberty Street



East End Historic District
Newburgh, Orange County, New York
Photos: Historic Architecture and
Decorative Art Consultants, 1983
Neg: Division for Historic
Preservation, Albany, New York

View: Courtney Street, north side
west of Liberty Street

135

612D 5A-61 Courtney

East End Historic District
Newburgh, Orange County, New York
Photos: Historic Architecture and
Decorative Art Consultants, 1983
Neg: Division for Historic
Preservation, Albany, New York

View: Liberty Street, west side,
south of Henry Street

136



East End Historic District
Newburgh, Orange County, New York
Photos: Historic Architecture and
Decorative Art Consultants, 1983
Neg: Division for Historic
Preservation, Albany, New York

137
View: South Liberty Street, west
side, north and south of
Courtney Avenue

137
south of Courtney Ave

East End Historic District
Newburgh, Orange County, New York
Photos: Historic Architecture and
Decorative Art Consultants, 1983
Neg: Division for Historic
Preservation, Albany, New York

View: Henry Street, south side,
east of Monument Street

138



East End Historic District
Newburgh, Orange County, New York
Photos: Historic Architecture and
Decorative Art Consultants, 1983
Neg: Division for Historic
Preservation, Albany, New York

139
View: Bayview Terrace, west side
south of Courtney Avenue

139

East End Historic District
Newburgh, Orange County, New York
Photos: Historic Architecture and
Decorative Art Consultants, 1983
Neg: Division for Historic
Preservation, Albany, New York

140
VIEW: Bayview Terrace east of
Liberty Street

140



View 141: St. Francis' Church from
Benkard Avenue

East End Historic District
Newburgh, Orange County, New York
Photos: Historic Architecture and
Decorative Art Consultants, 1983
Neg: Division for Historic
Preservation, Albany, New York

East End Historic District
Newburgh, Orange County, New York
Photos: Historic Architecture and
Decorative Arts Consultants, 1983
Neg: NYS Division for Historic
Preservation, Albany, New York

VIEW 142: Henry Street, north side
west of BayView Terrace



East End Historic District
Newburgh, Orange County, New York
Photos: Historic Architecture and
Decorative Art Consultants, 1983
Neg: Division for Historic
Preservation, Albany, New York

INTRUSION
136 BENKARD AVENUE
3 OF 71

East End Historic District
Newburgh, Orange County, New York
Photos: Historic Architecture and
Decorative Art Consultants, 1983
Neg: Division for Historic
Preservation, Albany, New York

INTRUSION
95-97 ANN STREET
1 OF 71

East End Historic District
Newburgh, Orange County, New York
Photos: Historic Architecture and
Decorative Art Consultants, 1983
Neg: Division for Historic
Preservation, Albany, New York

INTRUSION
107-117 BROADWAY
4 OF 71

East End Historic District
Newburgh, Orange County, New York
Photos: Historic Architecture and
Decorative Art Consultants, 1983
Neg: Division for Historic
Preservation, Albany, New York

INTRUSION
143 ANN STREET
2 OF 71

East End Historic District
Newburgh, Orange County, New York
Photos: Historic Architecture and
Decorative Art Consultants, 1983
Neg: Division for Historic
Preservation, Albany, New York

INTRUSION
131 BROADWAY
5 OF 71



INTRUSION
183 BROADWAY
8 OF 71

East End Historic District
Newburgh, Orange County, New York
Photos: Historic Architecture and
Decorative Art Consultants, 1983
Neg: Division for Historic
Preservation, Albany, New York

East End Historic District
Newburgh, Orange County, New York
Photos: historic Architecture and
Decorative Art Consultants, 1983
Neg: Division for Historic
Preservation, Albany, New York

INTRUSION
199-201 BROADWAY
9 OF 71

East End Historic District
Newburgh, Orange County, New York
Photos: Historic Architecture and
Decorative Art Consultants, 1983
Neg: Division for Historic
Preservation, Albany, New York

INTRUSION
211-217 BROADWAY
10 OF 71

East End Historic District
Newburgh, Orange County, New York
Photos: Historic Architecture and
Decorative Art Consultants, 1983
Neg: Division for Historic
Preservation, Albany, New York

INTRUSION
153 BROADWAY
6 OF 71

East End Historic District
Newburgh, Orange County, New York
Photos: Historic Architecture and
Decorative Art Consultants, 1983
Neg: Division for Historic
Preservation, Albany, New York

INTRUSION
167 BROADWAY
7 OF 71



INTRUSION
88 BROADWAY
13 OF 71

East End Historic District
Newburgh, Orange County, New York
Photos: Historic Architecture and
Decorative Art Consultants, 1983
Neg: Division for Historic
Preservation, Albany, New York

INTRUSION
106 BROADWAY
14 OF 71

East End Historic District
Newburgh, Orange County, New York
Photos: Historic Architecture and
Decorative Art Consultants, 1983
Neg: Division for Historic
Preservation, Albany, New York

East End Historic District
Newburgh, Orange County, New York
Photos: Historic Architecture and
Decorative Art Consultants, 1983
Neg: Division for Historic
Preservation, Albany, New York

INTRUSION
120-124 BROADWAY
15 OF 71

East End Historic District
Newburgh, Orange County, New York
Photos: Historic Architecture and
Decorative Art Consultants, 1983
Neg: Division for Historic
Preservation, Albany, New York

INTRUSION
223 BROADWAY
11 OF 11

INTRUSION
253 BROADWAY
12 OF 71

East End Historic District
Newburgh, Orange County, New York
Photos: Historic Architecture and
Decorative Art Consultants, 1983
Neg: Division for Historic
Preservation, Albany, New York



East End Historic District
Newburgh, Orange County, New York
Photos: Historic Architecture and
Decorative Art Consultants, 1983
Neg: Division for Historic
Preservation, Albany, New York

INTRUSION
234 BROADWAY
18 OF 71

East End Historic District
Newburgh, Orange County, New York
Photos: Historic Architecture and
Decorative Art Consultants, 1983
Neg: Division for Historic
Preservation, Albany, New York

INTRUSION
71-75 CHAMBERS STREET
19 OF 71

East End Historic District
Newburgh, Orange County, New York
Photos: Historic Architecture and
Decorative Art Consultants, 1983
Neg: Division for Historic
Preservation, Albany, New York

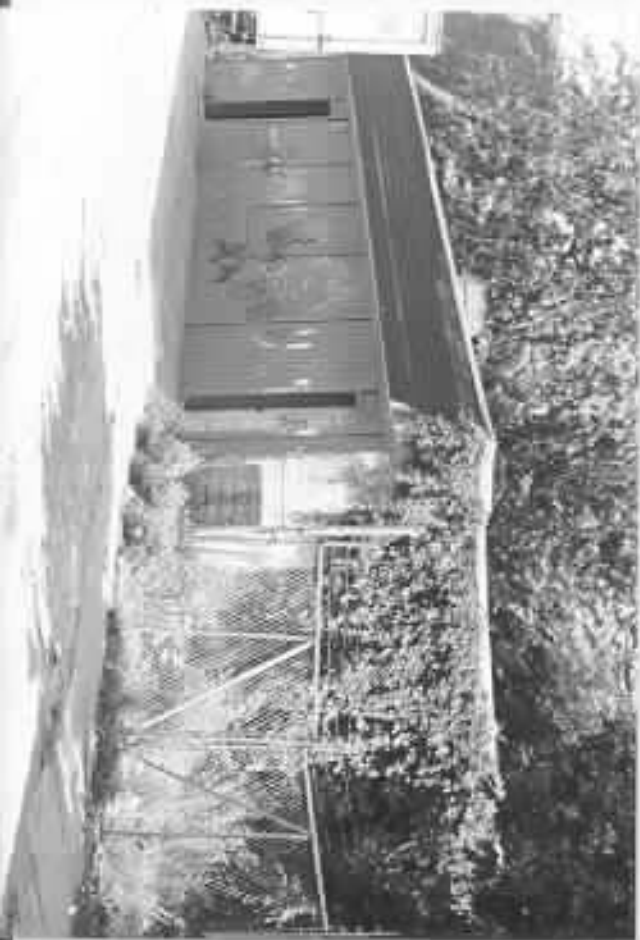
INTRUSION
42 CHAMBERS STREET
20 OF 71

INTRUSION
126 BROADWAY
16 OF 71

East End Historic District
Newburgh, Orange County, New York
Photos: Historic Architecture and
Decorative Art Consultants, 1983
Neg: Division for Historic
Preservation, Albany, New York

East End Historic District
Newburgh, Orange County, New York
Photos: Historic Architecture and
Decorative Art Consultants, 1983
Neg: Division for Historic
Preservation, Albany, New York

INTRUSION
198-200 BROADWAY
17 OF 71



East End Historic District
Newburgh, Orange County, New York
Photos: Historic Architecture and
Decorative Art Consultants, 1983
Neg: Division for Historic
Preservation, Albany, New York

INTRUSION
6 CLARK STREET
23 OF 71

East End Historic District
Newburgh, Orange County, New York
Photos: Historic Architecture and
Decorative Art Consultants, 1983
Neg: Division for Historic
Preservation, Albany, New York

INTRUSION
66-102 DUBOIS STREET (ST. LUKE'S
HOSPITAL)
24 OF 71

East End Historic District
Newburgh, Orange County, New York
Photos: Historic Architecture and
Decorative Art Consultants, 1983
Neg: Division for Historic
Preservation, Albany, New York

INTRUSION
8-10 FEDERAL STREET
25 OF 71

East End Historic District
Newburgh, Orange County, New York
Photos: Historic Architecture and
Decorative Art Consultants, 1983
Neg: Division for Historic
Preservation, Albany, New York

INTRUSION
44 CITY TERRACE
21 OF 71

East End Historic District
Newburgh, Orange County, New York
Photos: Historic Architecture and
Decorative Art Consultants, 1983
Neg: Division for Historic
Preservation, Albany, New York

INTRUSION
4 CLARK STREET
22 OF 71



East End Historic District
Newburgh, Orange County, New York
Photos: Historic Architecture and
Decorative Art Consultants, 1983
Neg: Division for Historic
Preservation, Albany, New York

INTRUSION
178 GRAND STREET
28 OF 71

East End Historic District
Newburgh, Orange County, New York
Photos: Historic Architecture and
Decorative Art Consultants, 1983
Neg: Division for Historic
Preservation, Albany, New York

INTRUSION
186 GRAND STREET
29 OF 71

East End Historic District
Newburgh, Orange County, New York
Photos: Historic Architecture and
Decorative Art Consultants, 1983
Neg: Division for Historic
Preservation, Albany, New York

INTRUSION
304 GRAND STREET
30 OF 71

East End Historic District
Newburgh, Orange County, New York
Photos: Historic Architecture and
Decorative Art Consultants, 1983
Neg: Division for Historic
Preservation, Albany, New York

INTRUSION
363 GRAND STREET
26 OF 71

East End Historic District
Newburgh, Orange County, New York
Photos: Historic Architecture and
Decorative Art Consultants, 1983
Neg: Division for Historic
Preservation, Albany, New York

INTRUSION
124-136 GRAND STREET (NEWBURGH
PUBLIC LIBRARY)
27 OF 81



East End Historic District
Newburgh, Orange County, New York
Photos: Historic Architecture and
Decorative Art Consultants, 1983
Neg: Division for Historic
Preservation, Albany, New York

INTRUSION
49-51 JOHNES STREET
33 OF 71

East End Historic District
Newburgh, Orange County, New York
Photos: Historic Architecture and
Decorative Art Consultants, 1983
Neg: Division for Historic
Preservation, Albany, New York

INTRUSION
18-22 JOHNES STREET
34 OF 71

East End Historic District
Newburgh, Orange County, New York
Photos: Historic Architecture and
Decorative Art Consultants, 1983
Neg: Division for Historic
Preservation, Albany, New York

INTRUSION
149-53 JOHNSON STREET
35 OF 71

East End Historic District
Newburgh, Orange County, New York
Photos: Historic Architecture and
Decorative Art Consultants, 1983
Neg: Division for Historic
Preservation, Albany, New York

INTRUSION
312 GRAND STREET
31 OF 71

East End Historic District
Newburgh, Orange County, New York
Photos: Historic Architecture and
Decorative Art Consultants, 1983
Neg: Division for Historic
Preservation, Albany, New York

INTRUSION
43 (REAR) JOHNES STREET
32 OF 71



East End Historic District
Newburgh, Orange County, New York
Photos: Historic Architecture and
Decorative Art Consultants, 1983
Neg: Division for Historic
Preservation, Albany, New York

INTRUSION
10-12 SOUTH JOHNSON STREET
38 OF 71

East End Historic District
Newburgh, Orange County, New York
Photos: Historic Architecture and
Decorative Art Consultants, 1983
Neg: Division for Historic
Preservation, Albany, New York

INTRUSION
18 LANDER STREET
39 OF 71

East End Historic District
Newburgh, Orange County, New York
Photos: Historic Architecture and
Decorative Art Consultants, 1983
Neg: Division for Historic
Preservation, Albany, New York

INTRUSION
47A LANDER STREET
40 OF 71

East End Historic District
Newburgh, Orange County, New York
Photos: Historic Architecture and
Decorative Art Consultants, 1983
Neg: Division for Historic
Preservation, Albany, New York

INTRUSION
160 JOHNSON STREET
36 OF 71

East End Historic District
Newburgh, Orange County, New York
Photos: Historic Architecture and
Decorative Art Consultants, 1983
Neg: Division for Historic
Preservation, Albany, New York

INTRUSION
19 SOUTH JOHNSON STREET
37 OF 71



East End Historic District
Newburgh, Orange County, New York
Photos: Historic Architecture and
Decorative Art Consultants, 1983
Neg: Division for Historic
Preservation, Albany, New York

INTRUSION
35 SOUTH LANDER STREET
43 OF 71

East End Historic District
Newburgh, Orange County, New York
Photos: Historic Architecture and
Decorative Art Consultants, 1983
Neg: Division for Historic
Preservation, Albany, New York

INTRUSION
37-41 SOUTH LANDER STREET
44 OF 71

East End Historic District
Newburgh, Orange County, New York
Photos: Historic Architecture and
Decorative Art Consultants, 1983
Neg: Division for Historic
Preservation, Albany, New York

INTRUSION
139 SOUTH LANDER STREET
45 OF 71

East End Historic District
Newburgh, Orange County, New York
Photos: Historic Architecture and
Decorative Art Consultants, 1983
Neg: Division for Historic
Preservation, Albany, New York

INTRUSION
185 LANDER STREET
41 OF 71

East End Historic District
Newburgh, Orange County, New York
Photos: Historic Architecture and
Decorative Art Consultants, 1983
Neg: Division for Historic
Preservation, Albany, New York

INTRUSION
17 SOUTH LANDER STREET
42 OF 71



East End Historic District
Newburgh, Orange County, New York
Photos: Historic Architecture and
Decorative Art Consultants, 1983
Neg: Division for Historic
Preservation, Albany, New York

INTRUSION
8-18 SOUTH LANDER STREET
46 OF 71

East End Historic District
Newburgh, Orange County, New York
Photos: Historic Architecture and
Decorative Art Consultants, 1983
Neg: Division for Historic
Preservation, Albany, New York

INTRUSION
88 SOUTH LANDER STREET
47 OF 71



INTRUSION
163 LIBERTY STREET
48 OF 71

East End Historic District
Newburgh, Orange County, New York
Photos: Historic Architecture and
Decorative Art Consultants, 1983
Negs: Division for Historic
Preservation, Albany, New York

INTRUSION
169 1/2 LIBERTY STREET
49 OF 71

East End Historic District
Newburgh, Orange County, New York
Photos: Historic Architecture and
Decorative Art Consultants, 1983
Negs: Division for Historic
Preservation, Albany, New York



East End Historic District
Newburgh, Orange County, New York
Photos: Historic Architecture and
Decorative Art Consultants, 1983
Neg: Division for Historic
Preservation, Albany, New York

INTRUSION
392 LIBERTY STREET
50 OF 71

East End Historic District
Newburgh, Orange County, New York
Photos: Historic Architecture and
Decorative Art Consultants, 1983
Neg: Division for Historic
Preservation, Albany, New York

INTRUSION
352 LIBERTY STREET
51 OF 71



INTRUSION
250 LIBERTY STREET
52 OF 71

East End Historic District
Newburgh, Orange County, New York
Photos: Historic Architecture and
Decorative Art Consultants, 1983
Neg: Division for Historic
Preservation, Albany, New York

INTRUSION
218 LIBERTY STREET
53 OF 71

East End Historic District
Newburgh, Orange County, New York
Photos: Historic Architecture and
Decorative Art Consultants, 1983
Neg: Division for Historic
Preservation, Albany, New York

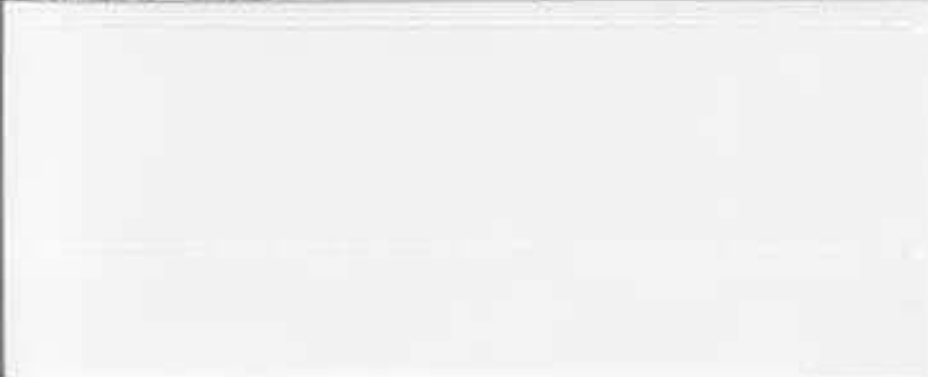


East End Historic District
Newburgh, Orange County, New York
Photos: Historic Architecture and
Decorative Art Consultants, 1983
Neg: Division for Historic
Preservation, Albany, New York

INTRUSION
152 LIBERTY STREET
34 OF 71

East End Historic District
Newburgh, Orange County, New York
Photos: Historic Architecture and
Decorative Art Consultants, 1983
Neg: Division for Historic
Preservation, Albany, New York

INTRUSION
24 LIBERTY STREET
55 OF 71



East End Historic District
Newburgh, Orange County, New York
Photos: Historic Architecture and
Decorative Art Consultants, 1983
Neg: Division for Historic
Preservation, Albany, New York

INTRUSION
133-137 NORTH MILLER STREET
56 OF 71

East End Historic District
Newburgh, Orange County, New York
Photos: Historic Architecture and
Decorative Art Consultants, 1983
Neg: Division for Historic
Preservation, Albany, New York

INTRUSION
133-157 MONTGOMERY STREET
57 OF 71



East End Historic District
Newburgh, Orange County, New York
Photos: Historic Architecture and
Decorative Art Consultants, 1983
Neg: Division for Historic
Preservation, Albany, New York

INTRUSION
19 PARMENTER STREET
58 OF 71

East End Historic District
Newburgh, Orange County, New York
Photos: Historic Architecture and
Decorative Art Consultants, 1983
Neg: Division for Historic
Preservation, Albany, New York

INTRUSION
79 RENWICK STREET
59 OF 71



East End Historic District
Newburgh, Orange County, New York
Photos: Historic Architecture and
Decorative Art Consultants, 1983
Neg: Division for Historic
Preservation, Albany, New York

INTRUSION
132 SOUTH STREET
60 OF 71

East End Historic District
Newburgh, Orange County, New York
Photos: Historic Architecture and
Decorative Art Consultants, 1983
Neg: Division for Historic
Preservation, Albany, New York

INTRUSION
201-205 SOUTH STREET
61 OF 71



East End Historic District
Newburgh, Orange County, New York
Photos: Historic Architecture and
Decorative Art Consultants, 1983
Neg: Division for Historic
Preservation, Albany, New York

INTRUSION
17 SPRING STREET
62 OF 7 11

East End Historic District
Newburgh, Orange County, New York
Photos: Historic Architecture and
Decorative Art Consultants, 1983
Neg: Division for Historic
Preservation, Albany, New York

INTRUSION
100 THIRD STREET
63 OF 71



East End Historic District
Newburgh, Orange County, New York
Photos: Historic Architecture and
Decorative Art Consultants, 1983
Neg: Division for Historic
Preservation, Albany, New York

INTRUSION
12 VAN NESS STREET
64 OF 71

East End Historic District
Newburgh, Orange County, New York
Photos: Historic Architecture and
Decorative Art Consultants, 1983
Neg: Division for Historic
Preservation, Albany, New York

INTRUSION
WASHINGTON AT WILLIAM (SCHOOL)
65 OF 71



East End Historic District
Newburgh, Orange County, New York
Photos: Historic Architecture and
Decorative Art Consultants, 1983
Neg: Division for Historic
Preservation, Albany, New York

INTRUSION
14-18 WILLIAM STREET
66 OF 71

East End Historic District
Newburgh, Orange County, New York
Photos: Historic Architecture and
Decorative Art Consultants, 1983
Neg: Division for Historic
Preservation, Albany, New York

INTRUSION
34-36 WILLIAM STREET
67 OF 71



INTRUSION
38 WILLIAM STREET
68 OF 71

East End Historic District
Newburgh, Orange County, New York
Photos: Historic Architecture and
Decorative Art Consultants, 1983
Neg: Division for Historic
Preservation, Albany, New York

East End Historic District
Newburgh, Orange County, New York
Photos: Historic Architecture and
Decorative Art Consultants, 1983
Neg: Division for Historic
Preservation, Albany, New York

44-48 WILLIAM STREET
69 OF 71



East End Historic District
Newburgh, Orange County, New York
Photos: Historic Architecture and
Decorative Art Consultants, 1983
Neg: Division for Historic
Preservation, Albany, New York

INTRUSION
95 WILLIAM STREET
70 OF 71

East End Historic District
Newburgh, Orange County, New York
Photos: Historic Architecture and
Decorative Art Consultants, 1983
Neg: Division for Historic
Preservation, Albany, New York

INTRUSION
147-163 SOUTH WILLIAM STREET
71 OF 71