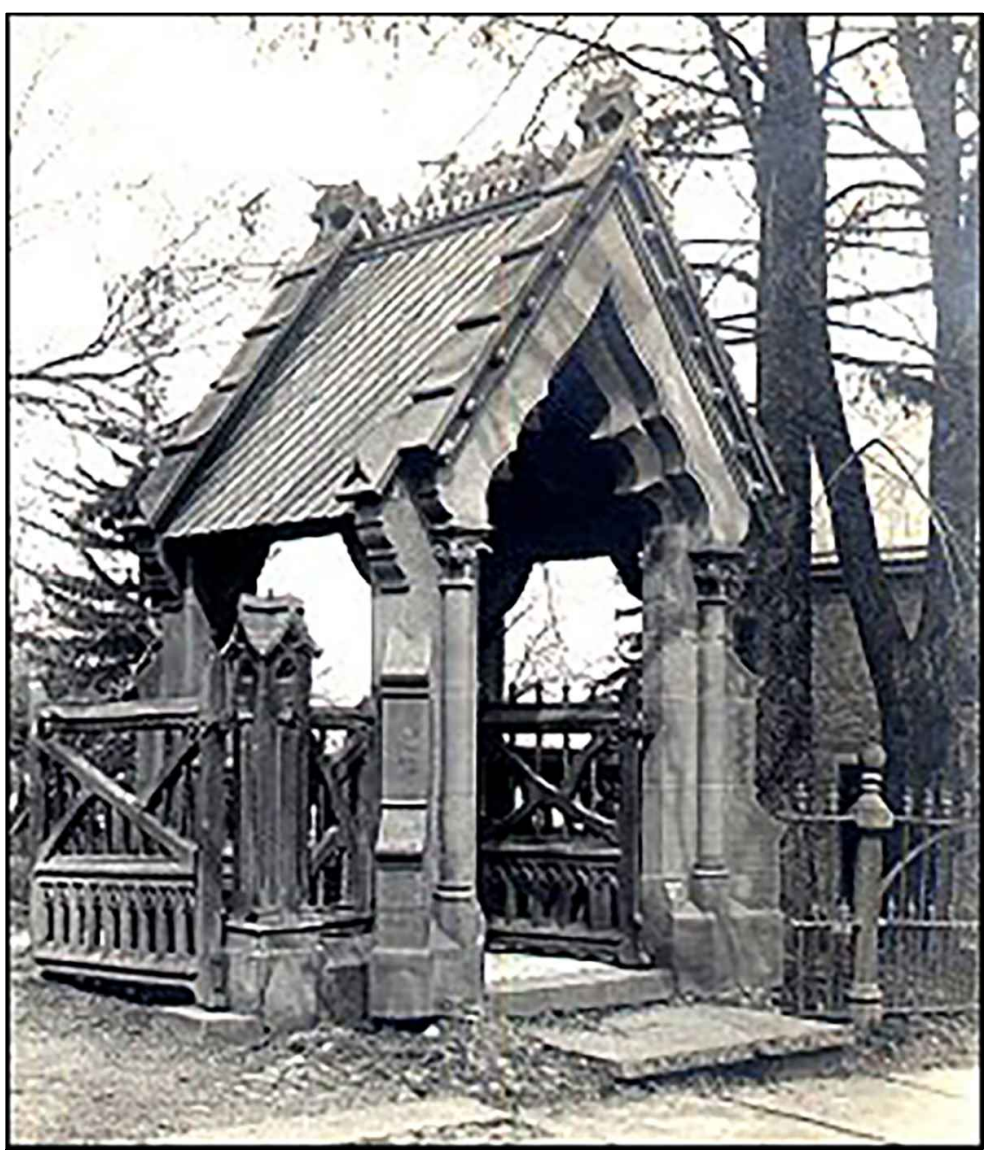


GENERAL PLAN OF HOUSE AND GARDENS Not to Scale
 Drawn by Frederick C. Withers (from Horticulturist, January 1853)

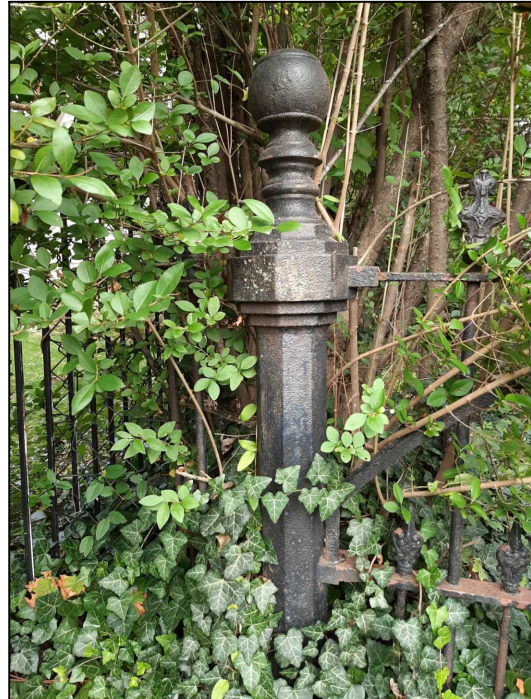
Key to the arrangement of the most remarkable specimens of trees on the grounds.

1. Magnolia acuminata—a magnificent tree; said to be quite visible from the opposite side of the river, a mile distant, when in bloom.	12. Common Weeping Ash.
2. Magnolia acuminata, or cucumber tree.	13. White Horse-Chestnut.
3. Davidiana Cypress.	14. Yellow do.
4. Magnolia virginiana (cumbrella).	15. Cast-iron Birch.
5. European Linden.	16. A fine broad specimen of a neglected native shrub, <i>Diospyros virginiana</i> , (Cedar wood).
6. Virginia linden. A large and fine specimen of a very rare tree.	17. A rare cypripedium (common English Mariposa). Quite a scarce tree, of low stature, with rough corky bark. A handsome specimen.
7. <i>Sabalina adnigrifolia</i> , (Maiden Hair tree). A fine specimen.	18. The large bronze vase.
8. A beautiful, low, broad tree, of the <i>Fern-leaved Beech</i> .	19 and 20. Weeping Willows.
9. English cork-barked Elm.	21. Pine tree.
10. European Larch.	22. <i>Abies balsamifera</i> .
11. Balsam Fir. A lofty, elegant specimen.	23. <i>Abies balsamifera</i> .
12. American White Spruce. The most beautiful specimen.	24. <i>Abies balsamifera</i> .
	25. The Sycamore.

In addition to these there are many interesting shrubs, plants, &c., on the lawn, that we have not thought it necessary to take note of in such a general sketch as this is intended to be.



1920's GATEHOUSE PICTURE



2021 GATE POST



1850 DOWNING MANSION

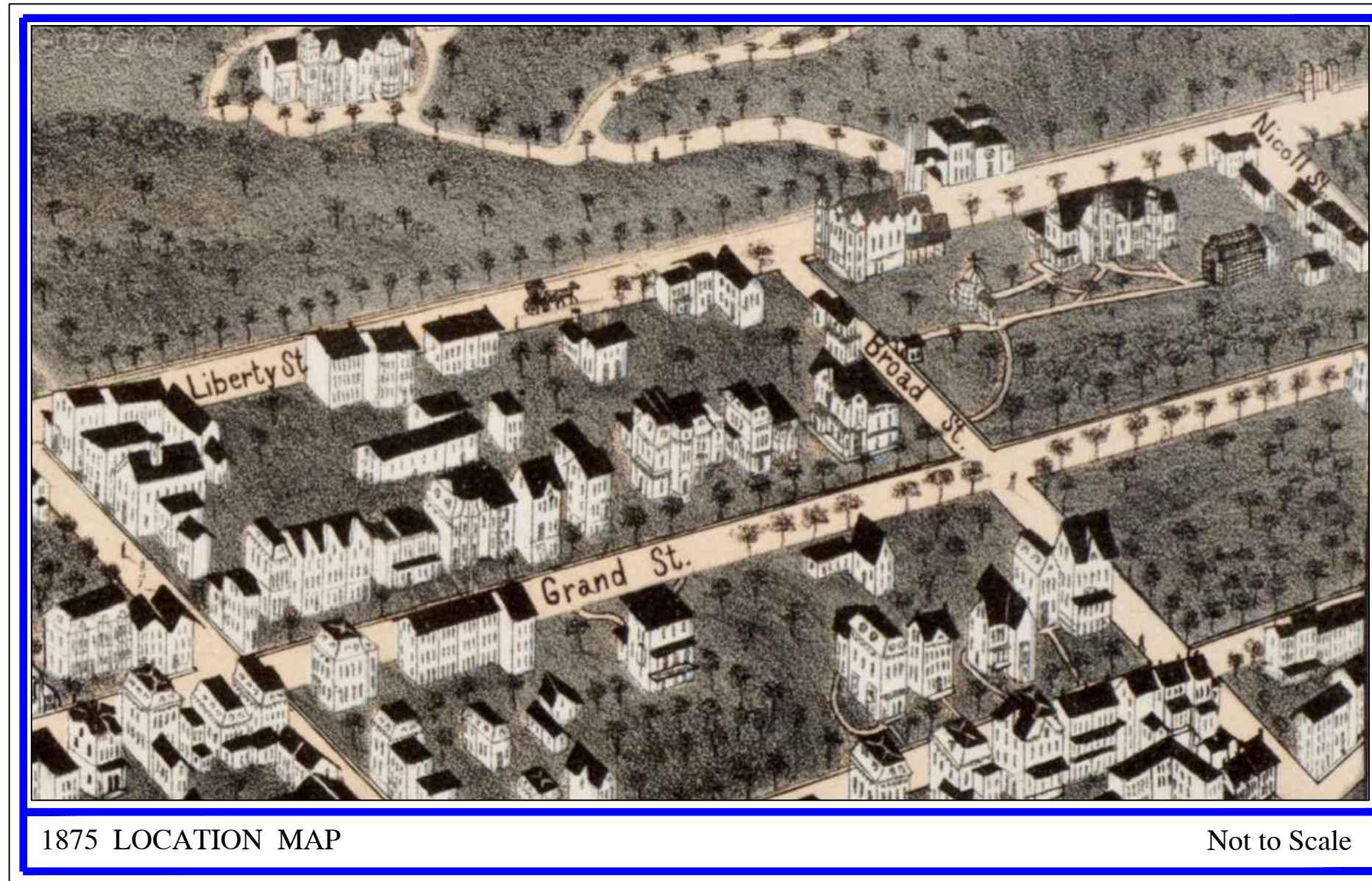
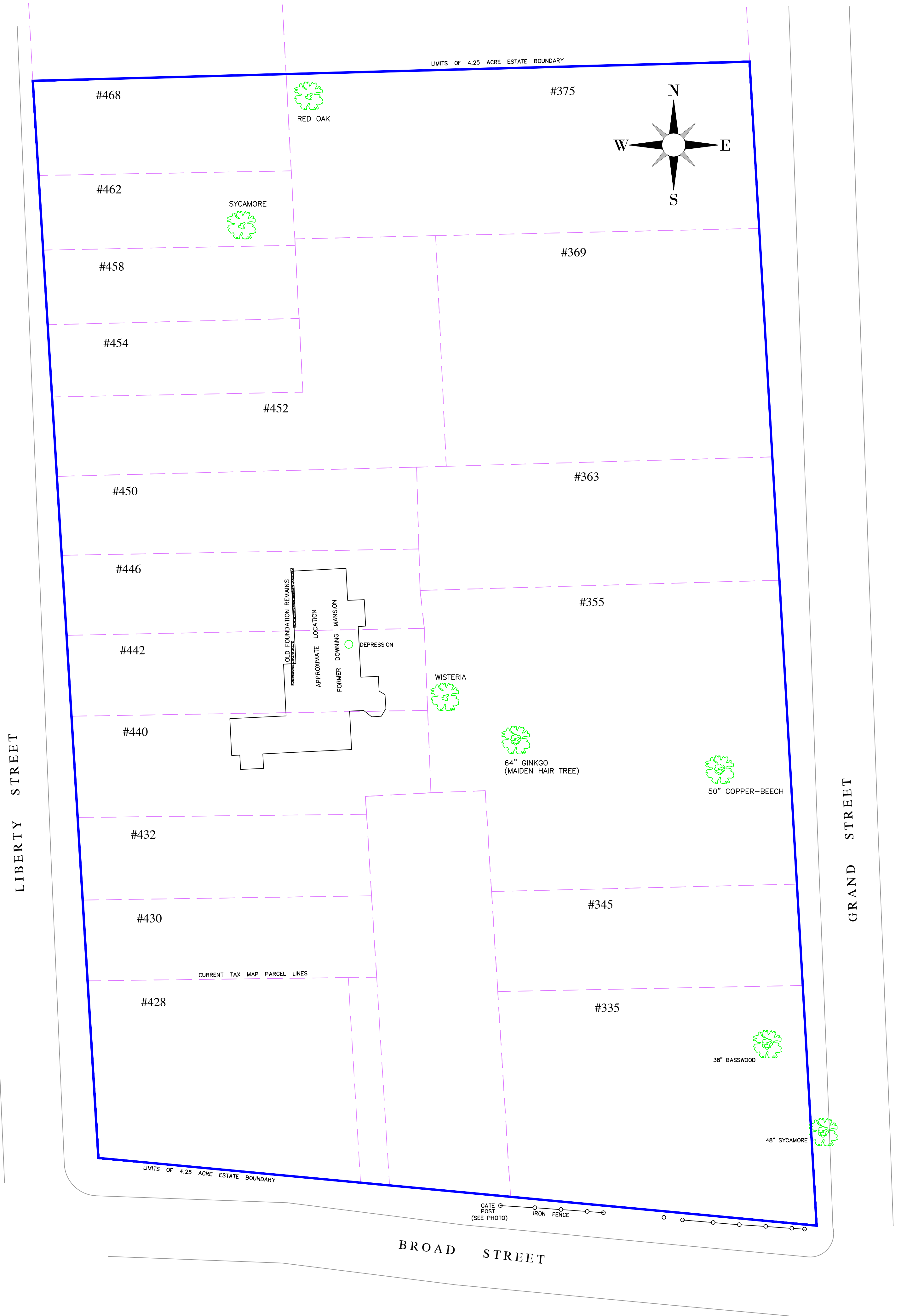
REFERENCE MAP:
 "Map of Newburgh As Surveyed by Stephen C. Parmenter
 Published by M. Dripps" dated 1850.
 Survey Map supplied by others.
 City of Newburgh Real Property Tax Map Section 9 Block1.

BROOKS & BROOKS
 LAND SURVEYORS, P.C.
 SURVEYING • PLANNING • GIS

11 Main Street
 Highland, NY 12528
 845-691-7339
 WWW.BNBPC.BIZ

Patricia Pauli Brooks, L.S. Registration No. 49795
 Richard C. Brooks, L.S. Registration No. 49600
 Christopher T. Grey, L.S., Associate Registration No. 51064

© Copyright 2021, by Brooks & Brooks, L.S.P.C.
 27 September, 2021 PROJ#8769, DWG#8769map.DWG



1875 LOCATION MAP

Not to Scale

ILLUSTRATIVE MAP FORMER SITE OF DOWNING ESTATE

— SITUATE —
 CITY OF NEWBURGH ORANGE COUNTY, NEW YORK
 GRAPHIC SCALE: 1 inch = 30 feet